



Original Article

Radiation-induced long-term dysphagia in survivors of head and neck cancer and association with dose-volume parameters



Thuy-Tien Maria Huynh^{a,b,*}, Einar Dale^b, Ragnhild Sørum Falk^c, Taran Paulsen Hellebust^{d,e}, Guro Lindviksmoen Astrup^b, Eirik Malinen^{d,e}, Nina Frederike Jeppesen Edin^d, Kristin Bjordal^{a,c}, Bente Brokstad Herlofson^{f,g}, Cecilie Esholt Kiserud^b, Åslaug Helland^{a,b}, Cecilie Delphin Amdal^{b,c}

^a Faculty of Medicine, University of Oslo, Oslo, Norway

^b Department of Oncology, Oslo University Hospital, Oslo, Norway

^c Research support services, Oslo University Hospital, Oslo, Norway

^d Department of Physics, University of Oslo, Oslo, Norway

^e Department of Medical Physics, Oslo University Hospital, Oslo, Norway

^f Faculty of Dentistry, University of Oslo, Oslo, Norway

^g Department of Otorhinolaryngology, Head and Neck Surgery, Oslo University Hospital, Oslo, Norway

ARTICLE INFO

Keywords:

Head and Neck Neoplasms
Cancer Survivors
Radiotherapy
Deglutition Disorders
Long-term Adverse Effects
Patient Reported Outcome Measures

ABSTRACT

Background: Although dysphagia is a common side effect after radiotherapy (RT) of head and neck cancer (HNC), data on long-term dysphagia is scarce. We aimed to 1) compare radiation dose parameters in HNC survivors with and without dysphagia, 2) investigate factors associated with long-term dysphagia and its possible impact on health-related quality of life (HRQoL), and 3) investigate how our data agree with existing NTCP models.

Methods: This cross-sectional study conducted in 2018–2020, included HNC survivors treated in 2007–2013. Participants attended a one-day examination in hospital and filled in patient questionnaires. Dysphagia was measured with the EORTC QLQ-H&N35 swallowing scale. Toxicity was scored with CTCAE v.4. We contoured swallowing organs at risk (SWOAR) on RT plans, calculated dose-volume histograms (DVHs), performed logistic regression analyses and tested our data in established NTCP models.

Results: Of the 239 participants, 75 (31%) reported dysphagia. Compared to survivors without dysphagia, this group had reduced HRQoL and the DVHs for infrahyoid SWOAR were significantly shifted to the right. Long-term dysphagia was associated with age (OR 1.07, 95% CI 1.03–1.10), female sex (OR 2.75, 95% CI 1.45–5.21), and mean dose to middle pharyngeal constrictor muscle (MD-MPCM) (OR 1.06, 95% CI 1.03–1.09). NTCP models overall underestimated the risk of long-term dysphagia.

Conclusions: Long-term dysphagia was associated with higher age, being female, and high MD-MPCM. Doses to distally located SWOAR seemed to be risk factors. Existing NTCP models do not sufficiently predict long-term dysphagia. Further efforts are needed to reduce the prevalence and consequences of this late effect.

Introduction

In head and neck cancer (HNC), late effects are commonly defined as side effects that occur or persist more than three months post-treatment [1,2]. Dysphagia is one of the most serious late effects following radiotherapy (RT) in HNC [3,4], and may impact survivors' health-related quality of life (HRQoL) [5,6]. It can lead to changes in meal routines, malnutrition, feeding tube dependence, aspiration-related

airway infections, psychological distress, and social isolation [4,5,7,8]. Information about the impact of long-term (> 5 years) dysphagia is scarce, as the literature primarily addresses the first years post-treatment [9–11]. The improved survival of HNC patients [12] highlights the need for more knowledge about their late effects.

The swallowing function is complex and involves interactions between multiple structures including swallowing muscles and cranial nerves [3,8,10] that are commonly exposed to high RT doses due to

* Corresponding author at: Department of oncology, Oslo University Hospital, Post Box 4950 Nydalen 0424, Oslo, Norway.

E-mail address: thuhuy@ous-hf.no (T.-T.M. Huynh).

<https://doi.org/10.1016/j.radonc.2023.110044>

Received 31 May 2023; Received in revised form 19 November 2023; Accepted 29 November 2023

Available online 5 December 2023

0167-8140/© 2023 The Authors. Published by Elsevier B.V. This is an open access article under the CC BY license (<http://creativecommons.org/licenses/by/4.0/>).

proximity to the target volumes [6]. Mounting evidence demonstrates that high RT doses to pharyngeal constrictor muscles (PCM), larynx, and oral cavity are associated with dysphagia [5,13–16] that may be irreversible or even progressive over time [17,18].

Normal tissue complication probability (NTCP) models are used to estimate risk of radiation-induced toxicities [19]. They are designed using statistical methods to select relevant explanatory variables, e.g. dosimetric, treatment-related, and clinical factors. To date, the inclusion of patient-reported outcome measures (PROMs) in NTCP modelling has been limited [19].

The purpose of the current study was to provide information on long-term dysphagia in HNC survivors. We aimed to 1) describe the level of long-term patient-reported dysphagia and compare RT dose parameters in HNC survivors with and without dysphagia, 2) investigate factors associated with dysphagia more than five years post-treatment and describe the possible impact on HNC survivors' HRQoL, and 3) investigate how our data agree with existing NTCP models.

Materials and methods

Study design and participants

The current study was a part of a comprehensive cross-sectional study conducted at Oslo University Hospital (OUH), Norway, over a two-year period from 2018 to provide more knowledge on late effects in HNC survivors beyond five years post-treatment. This was initiated in response to HNC survivors who pointed out the need for such knowledge. Eligible candidates were survivors treated for HNC in the period 2007–2013, ≥ 18 years old at the time of survey, and able to attend a one-day visit at OUH. We identified candidates from the hospital registry and invited them to participate by mail. Other sub-studies are published elsewhere [20,21]. The original sample size was based on

other long-term effects than dysphagia, aiming inclusion of 280 survivors. Of 310 survivors that consented to participation, 239 were available for analyses in this sub-study (Fig. 1).

Data collection

The participants completed a set of PROMs at home including the European Organisation for Research and Treatment of Cancer Quality of Life core questionnaire (EORTC QLQ-C30) [22] and the HNC specific module (EORTC QLQ-H&N35) [23], before attending the one-day visit. Clinical data including comorbidity according to Charlson comorbidity index [24] and performance status were obtained from clinical examinations during the visit and from medical records and radiation registry systems. Clinicians rated toxicity according to the Common Terminology Criteria for Adverse Events (CTCAE) v.4.0 [25].

Treatment

The primary RT regimen was 2 Gy per fraction, five to six days a week, with a total dose of 70 Gy to tumour and lymph node metastases and 46 Gy to elective neck with concomitant nimorazole, a hypoxic radiosensitizer, in line with DAHANCA guidelines [26]. Patients < 70 years with locally advanced disease received weekly cisplatin 40 mg/m². In the postoperative setting, patients received 50–66 Gy, 2 Gy per fraction, to the tumour bed(s) and 46 Gy to the elective neck, five days a week, with or without weekly cisplatin [20].

Treatment planning and delivery

Planning CT was performed with the patient immobilised with thermoplastic mask in treatment position. Treatment planning was done in Oncentra Masterplan (v3.0–4.3). At that time spinal cord, parotid

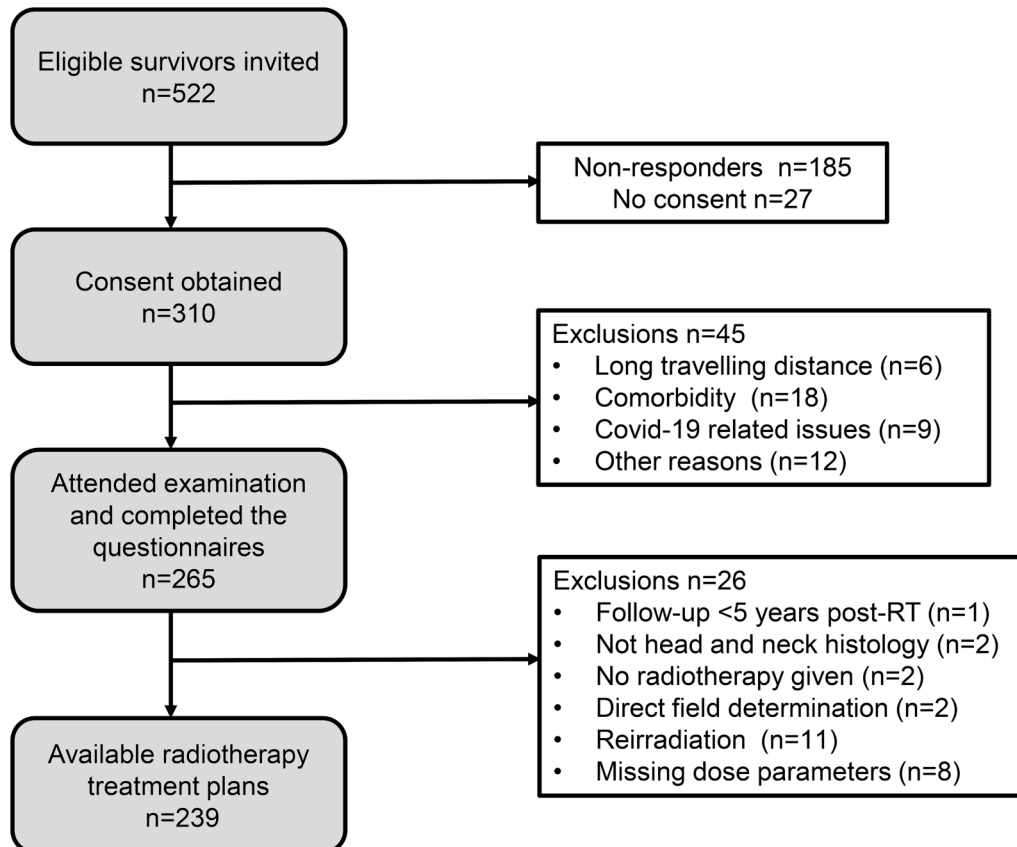


Fig. 1. Flowchart of the study participant selection.

glands, and submandibular glands were routinely delineated as organs at risk. Patients were treated with three-dimensional conformal RT or intensity-modulated RT (IMRT) 6 MV photons.

Swallowing organs at risk and dose-volume parameters

We exported the treatment plans from Oncentra Masterplan and restored them in Raystation (v11A, RaySearch Laboratories AB, Stockholm, Sweden). Thereafter, we delineated swallowing organs at risk (SWOAR) according to guidelines [27]. Base of tongue (BOT), oral cavity, and superior PCM were defined as suprahyoid SWOAR, while middle PCM, inferior PCM, cricopharyngeal muscle (CPM), esophageal inlet muscle (EIM), supraglottic larynx (SGL), and glottic larynx (GL) were defined as infrahyoid SWOAR. The SWOAR dose-volume parameters were retrieved from Raystation.

Definition of dysphagia and health-related quality of life

Patient-reported dysphagia was measured with the EORTC QLQ-H&N35 swallowing (SW) scale consisting of four items; problems swallowing liquids, soft food, solid food, and with choking while swallowing. Each item is scored on a Likert scale with categories 1 (not at all), 2 (a little), 3 (quite a bit), and 4 (very much) that are transformed to a continuous scale score from 0 to 100. High scores indicate high level of dysphagia. In this study, for aims 1 and 2, based on clinical judgement, dysphagia was defined as SW scale score of ≥ 25 upfront as a scale score of 25 required responses “very much” on at least one of the four SW scale items or “a little/quite a bit” on two or three of the items. For aim 3, to harmonise with Christianen [28], the four items were evaluated separately with responses “quite a bit” or “very much” defined as dysphagia. Observer-rated dysphagia was defined as CTCAE v.4.0 grade ≥ 2 . Dysphagia more than five years post-treatment was defined as long-term dysphagia. Impact of dysphagia on HRQoL was measured with EORTC QLQ-C30 Global QoL scale and the five functional scales (physical, role, cognitive, emotional, and social) [29]. Mean differences of ≥ 10 points were considered clinically significant [30].

Statistical analysis

Descriptive statistics were presented as median and range or mean and standard deviation for continuous data, and as frequency and proportion for categorical data. To compare RT parameters of SWOAR between participants with and without dysphagia, we generated dose-volume histograms (DVHs) with mean values (%) of V5-V70 (in 5 Gy increments) and 95 % confidence intervals (CI). Point estimates with non-overlapping CIs were considered statistically significant. Logistic regression analyses were performed to identify factors associated with long-term dysphagia. Age at RT, sex, comorbidity, smoking status, tumour site, T-stage, N-stage, RT scheme, RT technique, neck irradiation, concurrent chemotherapy, and mean doses to SWOAR were included. Variables with $p < 0.1$ in univariable analyses were included in the multivariable analyses. The number of survivors with dysphagia ($n = 75$) allowed seven variables in the multivariable model using the 1:10 rule-of-thumb [31]. Backward stepwise elimination was performed by removing the least significant variable (highest p-value) at each step, stopping at threshold $p < 0.05$ and results were presented as odds ratios (OR) with 95 % CI. Spearman correlation coefficient was calculated to explore correlations between variables and selection of surrogates was based on variance inflation factor (VIF) to avoid multicollinearity. Regression analyses were also carried out in the subgroup of patients with oropharyngeal cancer. Sensitivity analyses were performed with dysphagia threshold set to EORTC QLQ-H&N35 SW scale ≥ 33 .

To investigate how our data fit with selected NTCP models, we performed a closed testing procedure as described by Vergouwe [32]. Christianen et al [28] and Langendijk et al [33] assessed observer-rated dysphagia (RTOG/EORTC Radiation Morbidity Scoring Criteria and

CTCAE, respectively), while Christianen also evaluated patient-reported dysphagia on EORTC QLQ-H&N35 SW scale's four items separately. For each model, one of four methods was suggested based on bootstrapping frequency distribution; 1) keeping the original model (no adjustments), 2) recalibration in the large (only the model intercept is adjusted), 3) recalibration (both the model intercept and slope are adjusted), or 4) model revision (the regression coefficients of all model predictors are re-estimated). The model performance and discriminative ability were tested using Brier Score (BS) and area under the curve (AUC), where values of 0–0.25 and > 0.7 , respectively, were acceptable [34–36]. Calibration plots for original and updated models were generated to compare model predictions. The participants were binned into 10 equally sized groups, with the fraction of dysphagia per group shown on the y-axis and the predictive risk on the x-axis. We performed statistical analyses in Stata version 17 and R version 4.2.1.

Results

Characteristics of the overall group, and for HNC survivors with or without long-term dysphagia are displayed in Table 1. All participants completed the PROMs and had received RT with total dose of 50–70 Gy. The participants were compared to non-participating survivors (Supplementary Table 1). Of the 239 survivors included, 75 (31 %) reported dysphagia, and only 9 % of these and 3 % of the overall cohort had percutaneous endoscopic gastrostomy. The participants with dysphagia mainly reported problems with swallowing solid food (68 %) and choking (67 %) (Supplementary Table 2). Details on dysphagia mean score are provided in Supplementary Fig. 1. Fifty-one survivors (21 %) had observer-rated dysphagia (Supplementary Table 3).

Compared to survivors without dysphagia, the DVHs for survivors with long-term dysphagia were shifted more to the right for the infrahyoid SWOAR, indicating a dose-volume effect (Fig. 2). There were no observed differences for the suprahyoid SWOAR.

In the multivariable analyses, middle PCM and EIM were included as surrogates for the other infrahyoid SWOAR to avoid multicollinearity. This was based on the correlation matrix and VIF (Supplementary Table 4) showing strong correlation between mean dose to the middle PCM and inferior PCM and SGL, and strong correlation between mean dose to EIM and inferior PCM, CPM, SGL, and GL. Also, middle PCM and EIM are anatomically distanced. The multivariable analyses identified age at RT (OR 1.07, 95 % CI 1.03–1.10), female sex (OR 2.75, 95 % CI 1.45–5.21), and mean dose to middle PCM (OR 1.06, 95 % CI 1.03–1.09) as significantly associated with long-term dysphagia, while RT scheme, RT technique, neck irradiation, and mean dose to EIM were not (Table 2). Restricted to oropharyngeal cancer ($n = 127$), no association between long-term dysphagia and selected variables was shown (Supplementary Table 5). The sensitivity analyses (cut-off ≥ 33) gave similar results (Supplementary Table 6) as in the overall cohort. Survivors of HNC with dysphagia cut-off ≥ 25 had clinically significantly worse mean score of Global QoL, Physical, Role, Emotional, Cognitive, and Social Functioning compared to those without dysphagia (Supplementary Table 7).

The results from the closed testing showed which updated method was suggested for each NTCP model (Supplementary Tables 8–13). It resulted in full revision of Christianen's model 1 (AUC 0.72, BS 0.15) for observer-rated dysphagia and of model 3 (AUC 0.72, BS 0.04) for patient-reported problems with swallowing soft food. The original model 2 (AUC 0.66, BS 0.15) for problems with swallowing liquids and model 6 (AUC 0.63, BS 0.16) for observer-rated dysphagia by Langendijk were suggested to be maintained. The closed testing led to recalibration of model 4 (AUC 0.64, BS 0.17) for problems with swallowing solid food and for model 5 (AUC 0.67, BS 0.17) for choking while swallowing. Calibration plots for both original and updated NTCP models generally indicated suboptimal fit with our data (Fig. 3). They showed some improvement in the revised model 1, where superior PCM was eliminated and resulted in SGL as a sole predictor (Supplementary

Table 1
Patient and treatment characteristics of long-term head and neck cancer survivors treated with radiotherapy.

	All patients n = 239	No dysphagia n = 164	Dysphagia ^a n = 75
Age at radiotherapy (years)			
Median (range)	56 (14–80)	55 (14–77)	60 (35–80)
Age at survey (years)			
Median (range)	65 (20–87)	64 (20–84)	69 (43–87)
Time from radiotherapy to survey (years)			
Median (range)	8.4 (5–13)	8.4 (5–13)	8.5 (5–13)
CHARACTERISTICS AT THE TIME OF THE SURVEY			
Sex, n (%)			
Male	159 (67)	116 (71)	43 (57)
Performance status, n (%)			
WHO 0	145 (61)	111 (68)	34 (45)
WHO 1	69 (29)	43 (26)	26 (35)
WHO ≥ 2	25 (10)	10 (6)	15 (20)
Charlson comorbidity index, n (%)			
Score 0	124 (52)	89 (54)	35 (47)
Score 1–8	115 (48)	75 (46)	40 (53)
Living situation, n (%)			
Alone	57 (24)	34 (21)	23 (31)
Not alone	182 (76)	130 (79)	52 (69)
Smoking status, n (%)			
Never	67 (28)	50 (30)	17 (23)
Former	131 (55)	89 (54)	42 (56)
Current	41 (17)	25 (15)	16 (21)
Pack years^b			
Median (range)	8 (0–112)	7 (0–112)	12 (0–60)
Current alcohol use frequency, n (%)			
Never	30 (13)	15 (9)	15 (20)
Monthly or less	50 (21)	32 (20)	18 (24)
2–4 times/month	55 (23)	38 (23)	17 (23)
2–3 times/week	79 (33)	60 (37)	19 (25)
4–5 times/week	225 (10)	19 (12)	6 (8)
Feeding tube, n (%)			
Nasogastric tube	0 (0)	0 (0)	0 (0)
Percutaneous endoscopic gastrostomy	7 (3)	0 (0)	7 (9)
Dysphagia CTCAE grade ≥ 2, n (%)	51 (21)	11 (7)	40 (53)
TUMOUR AND TREATMENT CHARACTERISTICS AT THE TIME OF TREATMENT			
Tumour site, n (%)			
Oropharynx	127 (53)	90 (55)	37 (49)
Nasopharynx	7 (3)	2 (1)	5 (7)
Hypopharynx	4 (2)	1 (1)	3 (4)
Larynx	15 (6)	6 (4)	9 (12)
Oral cavity	41 (17)	29 (18)	12 (16)
Nose, sinuses	7 (3)	6 (4)	1 (1)
Unknown primary	12 (5)	9 (5)	3 (4)
Others ^c	26 (11)	21 (13)	5 (7)
T-stage, n (%)			
T0-2	184 (77)	129 (79)	55 (73)
T3-4	55 (23)	35 (21)	20 (27)
N-stage, n (%)			
N0-1	126 (53)	86 (52)	40 (53)
N2-3	113 (47)	78 (48)	35 (47)
Histology, n (%)			
Squamous cell carcinoma	203 (85)	137 (84)	66 (88)
Salivary gland carcinomas	25 (10)	20 (12)	5 (7)
Undifferentiated carcinoma	8 (3)	4 (2)	4 (5)
Others ^d	3 (1)	3 (2)	0 (0)
HPV status, n (%)			
No	29 (12)	21 (13)	8 (11)
Yes	67 (28)	48 (29)	19 (25)
Unknown	143 (60)	95 (58)	48 (64)
Cancer status, n (%)			
Recurrence free after primary treatment	212 (89)	147 (90)	65 (87)
Treated locoregional relapse	12 (5)	8 (5)	4 (5)
Treated second primary	15 (6)	9 (5)	6 (8)

Table 1 (continued)

	All patients n = 239	No dysphagia n = 164	Dysphagia ^a n = 75
Radiotherapy scheme, n (%)			
Primary radiotherapy	151 (63)	96 (59)	55 (73)
Postoperative radiotherapy	80 (33)	62 (38)	18 (24)
Radiotherapy at relapse	8 (4)	6 (4)	2 (3)
Radiotherapy technique, n (%)			
IMRT	131 (55)	84 (51)	47 (63)
3DCRT	108 (45)	80 (49)	28 (37)
Neck irradiation, n (%)			
Bilateral	166 (69)	105 (64)	61 (81)
Unilateral	57 (24)	44 (27)	13 (17)
No	16 (7)	15 (9)	1 (1)
Swallowing organs at risk mean dose, Gy (SD)			
Base of tongue	49 (16)	48 (16)	51 (15)
Oral cavity	31 (15)	31 (15)	32 (17)
Superior PCM	45 (15)	44 (15)	46 (15)
Middle PCM	50 (14)	47 (15)	55 (10)
Inferior PCM	41 (16)	38 (15)	47 (15)
Cricopharyngeal muscle	34 (16)	32 (15)	40 (16)
Esophageal inlet muscle	23 (15)	21 (14)	29 (15)
Supraglottic larynx	46 (16)	43 (16)	52 (14)
Glottic larynx	36 (18)	33 (16)	42 (18)
Concurrent chemotherapy, n (%)	124 (52)	83 (51)	41 (55)
Nimorazole, n (%)	146 (61)	94 (57)	52 (69)

Abbreviations: WHO; World Health Organization, CTCAE; Common Terminology Criteria for Adverse Events, IMRT; Intensity-modulated radiotherapy, 3DCRT; Three-dimensional conformal radiotherapy, SD; Standard deviation, PCM; Pharyngeal constrictor muscle.

^a Patient-reported dysphagia was defined as cut-off ≥ 25 on European Organisation for Research and Treatment of Cancer Quality of Life core questionnaire, the head and neck specific module, swallowing scale.

^b Pack years: (number of cigarettes x number of years)/20. For both former and current smokers.

^c Includes primary site in salivary glands and lip.

^d Adenocarcinoma/carcinoma with endocrine differentiation.

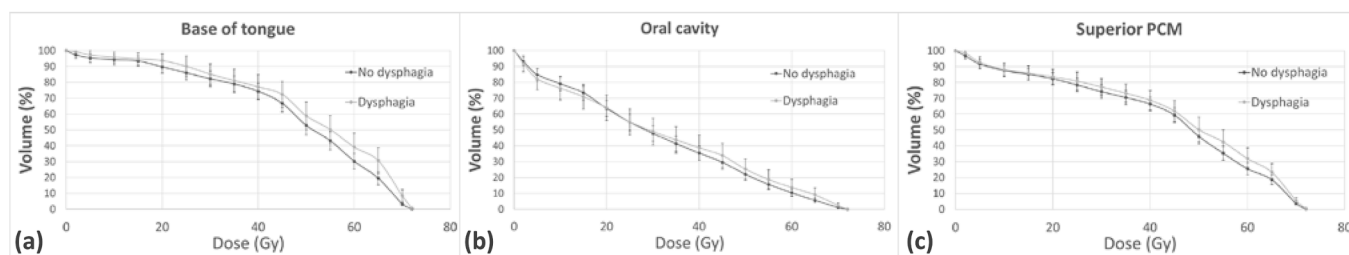
Table 8). For the remaining updated models 3, 4, and 5, no meaningful improvement was detected on the calibration plots. The risk of underestimating long-term dysphagia was most pronounced for models 4 and 5. The bootstrapping showed uncertainty in the selection of updating methods for these models ([Supplementary Tables 11 and 12](#)).

Discussion

This study provides information to fill the knowledge gap regarding long-term dysphagia in survivors of HNC. The result that one third of the survivors experienced long-term dysphagia with significant negative impact on their HRQoL emphasises the importance of addressing this problem. By studying RT dose parameters involved, identifying possible associations and testing our data on existing NTCP models, we contribute to the ongoing work of reducing the risk of long-term dysphagia in survivors. To our knowledge, this is the first attempt to evaluate whether established NTCP models are suitable for predicting dysphagia more than five years after RT. Our data suggested that higher age, being female, and RT mean doses to infrahyoid SWOAR are associated with long-term dysphagia. Established NTCP models did not sufficiently predict the risk of long-term dysphagia, even after model adjustments in the present study. Our results differ from recent reports with externally validated models. They found the oral cavity to be one of the most important structures discriminating patients with and without dysphagia at six months post-treatment [16,33]. One possible explanation may be the difference in assessment time between the studies and that the dose to the oral cavity might be less important for long-term dysphagia.

The prevalence of long-term dysphagia of 31 % in this study differs

Suprahyoid swallowing organs at risk



Infrahyoid swallowing organs at risk

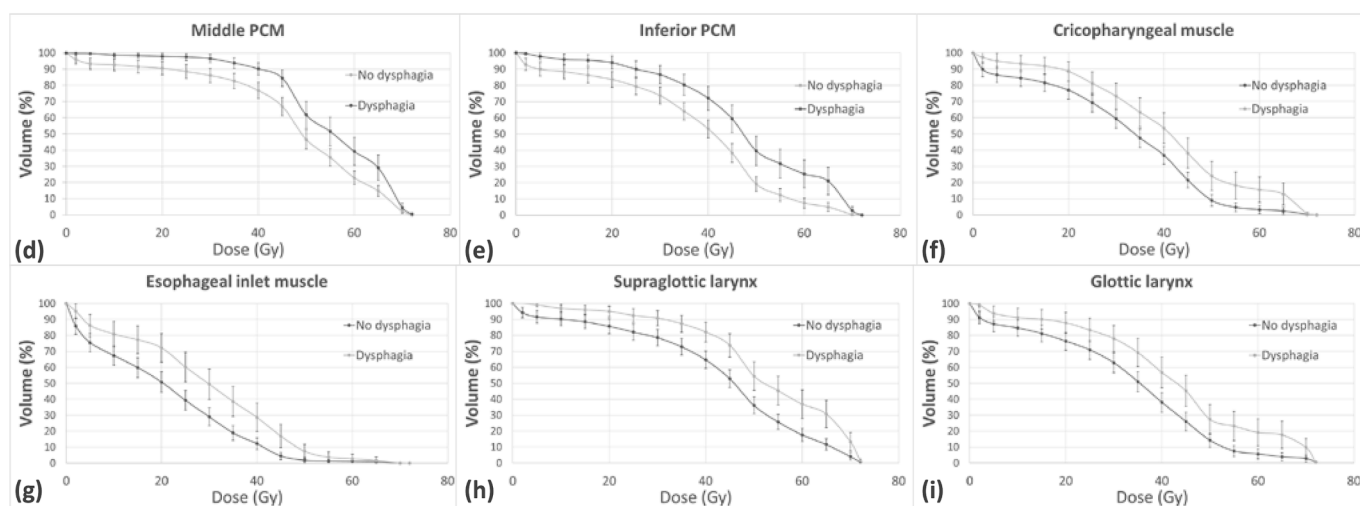


Fig. 2. Dose-volume histograms of swallowing organs at risk, stratified by survivors of head and neck cancer with dysphagia ($n = 75$) and without dysphagia ($n = 164$). Error bars represent 95 % confidence interval. (a) Base of tongue, (b) Oral cavity, (c) Superior pharyngeal constructor muscle (PCM), (d) Middle PCM, (e) Inferior PCM, (f) Cricopharyngeal muscle, (g) Esophageal inlet muscle, (h) Supraglottic larynx and (i) Glottic larynx.

somewhat from what others have reported. In a study of 148 patients with oropharyngeal cancer and median follow-up of 30 months, 18 % of the participants reported “poor” swallowing function on the M.D. Anderson dysphagia inventory composite score, while only 4 % had dysphagia CTCAE grade ≥ 2 [37]. In a population-level analysis of 16 000 HNC survivors, the two-year dysphagia prevalence and the dysphagia-related diagnoses stricture and aspiration pneumonia was 45.3 %, 10.2 %, and 8.7 %, respectively [38]. Another study found that 26 % of HNC survivors had a dysphagia-related diagnosis beyond 5 years follow-up [39]. In general, it was difficult to compare our result with others due to different evaluation methods and assessment time points applied across studies. Instrumental registrations of swallowing have been considered gold standards [6,8], but they are, like observer-rated side effects, found to not sufficiently reflect the patient’s symptoms [40–42]. PROMs have therefore gained more impact as study endpoints [14,43,44], although comparison between studies are still challenging as many different PROMs are used to assess dysphagia.

Previous studies indicated dysphagia to be associated with PCM, superior PCM, SGL, and/or GL, but did not show clear distinction between “upper” and “lower” swallowing structures as we found [13,17,45,46]. We observed DVH differences in survivors with long-term dysphagia compared to those without for infrahyoid SWOAR, but not for suprahyoid SWOAR, which deviate with prior reports. Whether this finding has implications for treatment planning needs to be

validated for long-term dysphagia in further prospective studies.

The identification of age as an associated factor with long-term dysphagia was in line with previous studies that found increased risk of dysphagia with higher age in HNC survivors [47,48]. RT-induced tissue fibrosis and atrophy have been described as contributive elements of dysphagia, and tend to worsen with older age [49]. This vulnerability may be explained by comorbidity and reduced reserve capacity [50]. Being female was another factor associated with long-term dysphagia, which is in concordance with reports of Orlandi et al [37], but they could not find prior examples in the literature. In reference populations of PROMs, females generally reported more symptoms and more impaired HRQoL than male participants [51]. One could expect this to be transferable to patient cohorts. Middle PCM, as predictor of long-term dysphagia, was considered to represent the other infrahyoid SWOAR due to the high correlation found between these structures. In the regression analyses, we chose to apply mean doses of the SWOAR as covariates, and the results of univariable analyses turned out to comply with the patterns of DVH for the respective SWOAR. This supports earlier publications which found mean doses to SWOAR to correlate strongly with their partial volume doses [28,52]. The subgroup analyses of oropharyngeal cancer show that dysphagia was not associated with the mean doses to the SWOAR. However, this subgroup was relatively small, and the results should be interpreted with caution due to the lack of statistical power.

Table 2Logistic regression analyses of factors associated with long-term dysphagia^a in survivors of head and neck cancer.

	Univariable analysis			Multivariable analysis		
	OR	95 % CI	p-value	OR	95 % CI	p-value
Age at radiotherapy (years)	1.059	1.024–1.094	0.001	1.065	1.028–1.103	0.001
Sex (female vs. male)	1.798	1.019–3.174	0.043	2.747	1.448–5.210	0.002
Charlson comorbidity index (≥ 1 vs. 0)	1.356	0.784–2.346	0.276			
Smoking status						
never	Ref.					
former	1.388	0.716–2.689	0.331			
current	1.882	0.817–4.337	0.137			
Tumour site (oropharynx vs. other)	0.801	0.463–1.384	0.426			
T-stage (T3-4 vs. T0-2)	1.340	0.711–2.526	0.280			
N-stage (N2-3 vs. N0-1)	0.965	0.558–1.668	0.898			
Radiotherapy scheme						
Primary radiotherapy	Ref.					
Postoperative radiotherapy	0.507	0.272–0.948	0.032			
Radiotherapy at relapse	0.582	0.114–2.982	0.516			
Radiotherapy technique (IMRT vs. 3DCRT)	1.599	0.914–2.796	0.100			
Neck irradiation						
Bilateral	Ref.					
Unilateral	0.509	0.254–1.019	0.056			
No	0.115	0.015–0.890	0.038			
Concurrent chemotherapy (yes vs. no)	1.177	0.680–2.036	0.560			
Base of tongue, mean dose (Gy)	1.013	0.995–1.032	0.165			
Oral cavity, mean dose (Gy)	1.004	0.986–1.022	0.651			
Superior PCM, mean dose (Gy)	1.009	0.990–1.028	0.373			
Middle PCM, mean dose (Gy)	1.052	1.024–1.082	<0.001	1.060	1.028–1.093	<0.001
Inferior PCM, mean dose (Gy)	1.047	1.025–1.070	<0.001			
Cricopharyngeal muscle, mean dose (Gy)	1.036	1.016–1.056	<0.001			
Esophageal inlet muscle, mean dose (Gy)	1.040	1.019–1.061	<0.001			
Supraglottic larynx, mean dose (Gy)	1.045	1.023–1.068	<0.001			
Glottic larynx, mean dose (Gy)	1.032	1.014–1.050	<0.001			

Abbreviations: OR; Odds ratio, CI; Confidence interval, IMRT; Intensity-modulated radiotherapy, 3DCRT; Three-dimensional conformal radiotherapy, PCM; Pharyngeal constrictor muscle.

Bold: Univariable analyses $p < 0.1$; Multivariable analyses $p < 0.05$.

^a Patient-reported dysphagia was defined as cut-off ≥ 25 on European Organisation for Research and Treatment of Cancer Quality of Life core questionnaire, the head and neck specific module, swallowing scale.

Adaption to symptoms may be expected many years following treatment [53,54], but the present study showed that dysphagia post five years follow-up was negatively associated with the survivors' HRQoL and their physical, emotional, and social functioning. Swallowing is a basic function, and even minor deviations might influence general health, well-being, and contentment [11,41]. Swallowing activity can also be negatively influenced by other radiation-induced symptoms such as xerostomia, dysgeusia, trismus, and lymphedema. These late effects can also contribute to deteriorated HRQoL and functioning [17].

The updated NTCP models based on our data mostly had acceptable AUC and BS, but overall the calibration plots showed a poor fit, mainly exhibiting risk underestimation. This finding supports the point made by Van Calster et al [55] that models with good discrimination can be poorly calibrated, and thereby be misleading in clinical decision-making. Disagreement due to the difference in time of assessment can also be related to fibrosis and atrophy of SWOAR, which may occur or progress years after treatment completion leading to long-term dysphagia [17,56,57]. However, knowledge of underlying biological mechanisms of dysphagia and progression over time is yet insufficient. Hansen et al [58] emphasized that the study cohort and the validation cohort should be as similar as possible when evaluating NTCP models, as differences can give deviating model factors and parameters. Christianen et al [28] did not report the frequencies of observer-rated and patient-reported dysphagia, leaving us unaware of their numbers compared to ours. The present study results highlight the need for NTCP models which predict long-term dysphagia, preferably in prospectively collected data, where optimal calibration and validation processes are warranted.

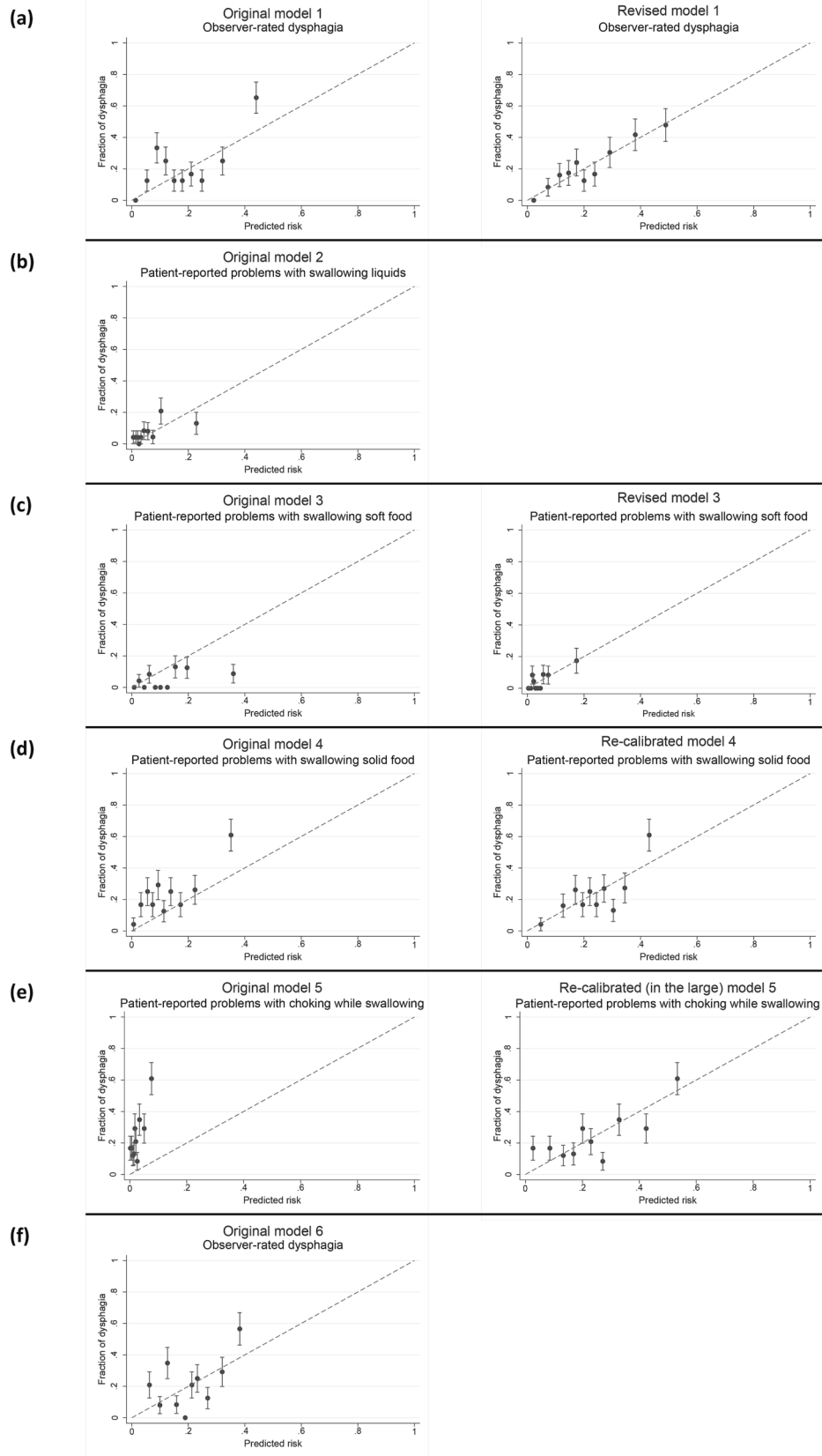
SWOAR sparing strategies have been introduced in recent years showing promising results in reducing toxicity [59,60]. Still, we believe

our results of previous treatment practices are relevant in prioritising OAR in dose-sparing strategies of today's treatment planning and in improving NTCP models for long-term dysphagia.

This study is strengthened by the high compliance and use of PROMs, as the survivors' own experience of dysphagia more directly reflects how this impact their daily lives. However, defining dysphagia as EORTC QLQ-H&N35 SW scale score of ≥ 25 may be questioned. This was based on careful consideration of the possible responses of the four items of the SW scale and we performed a sensitivity analysis that supported this definition. The cross-sectional design is another limitation as baseline data were not available. Baseline swallowing function has been reported as an independent predictor of dysphagia [4,9]. Our study included a more heterogeneous cohort compared to others, who primarily limit inclusions to patients with squamous cell carcinomas of the pharynx, oral cavity, and larynx treated in a primary setting. However, the purpose of our study was to describe the clinical reality. When comparing the participants to the non-participating survivors, there were no difference in sex or travel distance to the hospital, but there was a difference in age. The age distribution of the participants ranged from 20 to 87 years, while non-participating survivors had an age range of 16–97 years. A selection bias is possible, because survivors with high level of symptoms might regard participation more meaningful than those without complaints, or the opposite; survivors with high level of symptoms might find the one-day visit too tiresome.

Conclusions

The present study found that one third of the HNC survivors experienced long-term dysphagia with significant negative impact on their HRQoL. Our data suggested that higher age, being female, and RT mean doses to infrahyoid SWOAR are associated with long-term dysphagia.



(caption on next page)

Fig. 3. Calibration plots for original and updated normal tissue complication probability models. (a) Model 1: Observer-rated dysphagia by Christianen et al, original and revised, (b) Model 2: Patient-reported problems with swallowing liquids, original, (c) Model 3: Patient-reported problems with swallowing soft food, original and revised, (d) Model 4: Patient-reported problems with swallowing solid food, original and re-calibrated, (e) Model 5: Patient-reported problems with choking while swallowing, original and re-calibrated, (f) Model 6: Observer-rated dysphagia by Langendijk et al, original. Dashed lines represent perfect match, where the intercept has the value 0 and slope has the value 1. Generally, curves or points which lie above this line underestimate the predicted risk, and conversely, curves and points below the line overestimate the predicted risk. The error bars represent the binominal uncertainty equal to one standard error.

These factors may have implications for e.g. dose-sparing strategies in treatment planning. Existing NTCP models may not be suitable for predicting dysphagia more than five years after RT, and further efforts should be made to reduce the prevalence and consequences of this late effect in future HNC survivors.

Statements & declarations

Author contributions

KB, BBH, CEK and CDA conceived the idea, planned, and managed the project. ED, RSF, GLA, EM, and ÅH contributed to the study design. TTMH, TPH, GLA, BBH, and CDA collected the data. TTMH, ED, RSF, TPH, and CDA performed the analyses. All authors participated in the discussion and interpretation of the results. First draft of the manuscript was written by TTMH and CDA. All authors were involved in editing successive drafts and approved the final submitted version.

Funding

The first author TTMH received PhD funding from University of Oslo: Life science through the convergence environment Protons contra cancer (PROCCA; project number 102375110) and the Norwegian Radium Hospital Foundation (application number 225010).

Ethics approval

This study was performed in line with the principles of the Declaration of Helsinki. Approval was granted by the Regional Committees for Medical and Health Research Ethics (date 06/13/2018, reference 2018/1005), the local protocol committee (date 06/12/2018, reference 2018-21/22) and the Oslo University Hospital privacy office (date 05/29/2018).

Consent to participate

Written informed consent was obtained from all participants before inclusion in the study.

Declaration of competing interest

The authors declare that they have no known competing financial interests or personal relationships that could have appeared to influence the work reported in this paper.

Acknowledgements

We would like to express our appreciation to Gunhild Maria Gjerset for administrative and practical support in the execution of the study, Morten Egeberg Evensen and Solveig Undheim Thomassen for processing the preparatory radiotherapy data and our user representatives, Chris Foss and Håvard Aagensen, for their contributions as project partners.

Appendix A. Supplementary material

Supplementary data to this article can be found online at <https://doi.org/10.1016/j.radonc.2023.110044>.

References

- [1] Taylor K, Krüger M, Singer S. Long-term toxicity among head and neck cancer patients—A systematic review. *Der Onkologe*. 2021;27:145-9 DOI: 10.1007/s00761-021-00914-x.
- [2] Baudalet M, Van den Steen L, Tomassen P, Bonte K, Deron P, Huvenne W, et al. Very late xerostomia, dysphagia, and neck fibrosis after head and neck radiotherapy. *Head Neck*. 2019;41:3594-603 DOI: 10.1002/hed.25880.
- [3] Strojjan P, Hutcheson KA, Eisbruch A, Beitler JJ, Langendijk JA, Lee AWM, et al. Treatment of late sequelae after radiotherapy for head and neck cancer. *Cancer Treat Rev* 2017;59:79-92. <https://doi.org/10.1016/j.ctrv.2017.07.003>.
- [4] Brady GC, Hardman JC, Paleri V, Harrington KJ, Roe JWG. Changing paradigms in the treatment of residual/recurrent head and neck cancer: implications for dysphagia management. *Curr Opin Otolaryngol Head Neck Surg* 2020;28:165-71. <https://doi.org/10.1097/MOO.0000000000000620>.
- [5] Duprez F, Madani I, De Potter B, Boterberg T, De Neve W. Systematic review of dose-volume correlates for structures related to late swallowing disturbances after radiotherapy for head and neck cancer. *Dysphagia* 2013;28:337-49. <https://doi.org/10.1007/s00455-013-9452-2>.
- [6] Ortigara GB, Bonzanini LLL, Schulz RE, Ferrazzo KL. Late radiation effects in survivors of head and neck cancer: State of the science. *Crit Rev Oncol Hematol* 2021;162:103335. <https://doi.org/10.1016/j.critrevonc.2021.103335>.
- [7] Deantonio L, Masini L, Brambilla M, Pia F, Krengli M. Dysphagia after definitive radiotherapy for head and neck cancer. Correlation of dose-volume parameters of the pharyngeal constrictor muscles. *Strahlenther Onkol* 2013;189:230-6. <https://doi.org/10.1007/s00066-012-0288-8>.
- [8] De Felice F, de Vincentiis M, Luzzi V, Magliulo G, Tombolini M, Ruoppolo G, et al. Late radiation-associated dysphagia in head and neck cancer patients: evidence, research and management. *Oral Oncol* 2018;77:125-30. <https://doi.org/10.1016/j.oraloncology.2017.12.021>.
- [9] Frowen J, Drosowsky A, Perry A, Corry J. Long-term swallowing after chemoradiotherapy: Prospective study of functional and patient-reported changes over time. *Head Neck* 2016;38:E307-15. <https://doi.org/10.1002/hed.23991>.
- [10] Gharzai LA, Li P, Schipper MJ, Yao J, Mayo CS, Wilkie JR, et al. Characterization of very late dysphagia after chemoradiation for oropharyngeal squamous cell carcinoma. *Oral Oncol* 2020;111:104853. <https://doi.org/10.1016/j.oraloncology.2020.104853>.
- [11] Patterson JM. Late effects of organ preservation treatment on swallowing and voice; presentation, assessment, and screening. *Front Oncol* 2019;9:401. <https://doi.org/10.3389/fonc.2019.00401>.
- [12] Sung H, Ferlay J, Siegel RL, Laversanne M, Soerjomataram I, Jemal A, et al. Global cancer statistics 2020: GLOBOCAN estimates of incidence and mortality worldwide for 36 cancers in 185 countries. *CA Cancer J Clin* 2021;71:209-49. <https://doi.org/10.3322/caac.21660>.
- [13] Deschuymer S, Nevens D, Duprez F, Laenen A, Dejaeger E, De Neve W, et al. Clinical factors impacting on late dysphagia following radiotherapy in patients with head and neck cancer. *Br J Radiol* 2018;91:20180155. <https://doi.org/10.1259/bjr.20180155>.
- [14] Brodin NP, Tome WA. Revisiting the dose constraints for head and neck OARs in the current era of IMRT. *Oral Oncol* 2018;86:8-18. <https://doi.org/10.1016/j.oraloncology.2018.08.018>.
- [15] Schwartz DL, Hutcheson K, Barringer D, Tucker SL, Kies M, Holsinger FC, et al. Candidate dosimetric predictors of long-term swallowing dysfunction after oropharyngeal intensity-modulated radiotherapy. *Int J Radiat Oncol Biol Phys* 2010;78:1356-65. <https://doi.org/10.1016/j.ijrobp.2009.10.002>.
- [16] Van den Bosch L, van der Schaaf A, van der Laan HP, Hoebers FJP, Wijers OB, van den Hoek JGM, et al. Comprehensive toxicity risk profiling in radiation therapy for head and neck cancer: A new concept for individually optimised treatment. *Radiother Oncol* 2021;157:147-54. <https://doi.org/10.1016/j.radonc.2021.01.024>.
- [17] Chiu YH, Tseng WH, Ko JY, Wang TG. Radiation-induced swallowing dysfunction in patients with head and neck cancer: A literature review. *J Formos Med Assoc* 2022;121:3-13. <https://doi.org/10.1016/j.jfma.2021.06.020>.
- [18] Christianen ME, Verdonck-de Leeuw IM, Doornaert P, Chouvalova O, Steenbakkers RJ, Koken PW, et al. Patterns of long-term swallowing dysfunction after definitive radiotherapy or chemoradiation. *Radiother Oncol* 2015;117:139-44. <https://doi.org/10.1016/j.radonc.2015.07.042>.
- [19] Brodin NP, Kabarriti R, Garg MK, Guha C, Tome WA. Systematic review of normal tissue complication models relevant to standard fractionation radiation therapy of the head and neck region published after the QUANTEC reports. *Int J Radiat Oncol Biol Phys* 2018;100:391-407. <https://doi.org/10.1016/j.ijrobp.2017.09.041>.
- [20] Huynh TTM, Aass HCD, Falk RS, Astrup GL, Helland A, Bjoro T, et al. Associations between patient-reported late effects and systemic cytokines in long-term survivors of head and neck cancer treated with radiotherapy. *J Cancer Surviv* 2022;1-12. <https://doi.org/10.1007/s11764-022-01273-1>.

- [21] Ivanova A, Rodriguez-Cano R, Kvale IL, Harcourt D, Kiserud CE, Amdal CD. Body image concerns in long-term head and neck cancer survivors: prevalence and role of clinical factors and patient-reported late effects. *J Cancer Surviv* 2023;17:526–34. <https://doi.org/10.1007/s11764-022-01311-y>.
- [22] Bjordal K, de Graeff A, Fayers PM, Hammerlid E, van Pottelsberghe C, Curran D, et al. A 12 country field study of the EORTC QLQ-C30 (version 3.0) and the head and neck cancer specific module (EORTC QLQ-H&N35) in head and neck patients. EORTC Quality of Life Group. *Eur J Cancer* 2000;36:1796–807. [https://doi.org/10.1016/s0959-8049\(00\)00186-6](https://doi.org/10.1016/s0959-8049(00)00186-6).
- [23] Bjordal K, Hammerlid E, Ahlner-Elmqvist M, de Graeff A, Boysen M, Evensen JF, et al. Quality of life in head and neck cancer patients: validation of the European Organization for Research and Treatment of Cancer Quality of Life Questionnaire-H&N35. *J Clin Oncol* 1999;17:1008–19. <https://doi.org/10.1200/JCO.1999.17.3.1008>.
- [24] Charlson ME, Pompei P, Ales KL, MacKenzie CR. A new method of classifying prognostic comorbidity in longitudinal studies: development and validation. *J Chronic Dis* 1987;40:373–83. [https://doi.org/10.1016/0021-9681\(87\)90171-8](https://doi.org/10.1016/0021-9681(87)90171-8).
- [25] National Cancer Institute. NCI Common Terminology Criteria for Adverse Events (CTCAE) v.4.0 2010 [cited 2023 April 25]. Available from: https://ctep.cancer.gov/protocoldevelopment/electronic_applications/ctc.htm.
- [26] DAHANCA Radiotherapy Quality Assurance Group. DAHANCA radiotherapy guidelines [cited 2022 May 24]. Available from: <https://www.dahanca.dk/>.
- [27] Brouwer CL, Steenbakkers RJ, Bourhis J, Budach W, Grau C, Gregoire V, et al. CT-based delineation of organs at risk in the head and neck region: DAHANCA, EORTC, GORTEC, HKNPCSG, NCI CTG, NCR1, NRG Oncology and TROG consensus guidelines. *Radiother Oncol* 2015;117:83–90. <https://doi.org/10.1016/j.radonc.2015.07.041>.
- [28] Christensen ME, Schilstra C, Beetz I, Muijs CT, Chouvalova O, Burlage FR, et al. Predictive modelling for swallowing dysfunction after primary (chemo)radiation: results of a prospective observational study. *Radiother Oncol* 2012;105:107–14. <https://doi.org/10.1016/j.radonc.2011.08.009>.
- [29] Fayers P, Aaronson N, Bjordal K, Groenvold M, Curran D. EORTC QLQ-C30 Scoring Manual: EORTC Quality of Life Group; 2001 [cited 2023 February 10]. Available from: <https://qol.eortc.org/manuals>.
- [30] Musoro JZ, Coens C, Singer S, Tribius S, Oosting SF, Groenvold M, et al. Minimally important differences for interpreting European Organisation for Research and Treatment of Cancer Quality of Life Questionnaire Core 30 scores in patients with head and neck cancer. *Head Neck* 2020;42:3141–52. <https://doi.org/10.1002/hed.26363>.
- [31] Peduzzi P, Concato J, Kemper E, Holford TR, Feinstein AR. A simulation study of the number of events per variable in logistic regression analysis. *J Clin Epidemiol* 1996;49:1373–9. [https://doi.org/10.1016/s0895-4356\(96\)00236-3](https://doi.org/10.1016/s0895-4356(96)00236-3).
- [32] Vergouwe Y, Nieboer D, Oostenbrink R, Debray TPA, Murray GD, Kattan MW, et al. A closed testing procedure to select an appropriate method for updating prediction models. *Stat Med* 2017;36:4529–39. <https://doi.org/10.1002/sim.7179>.
- [33] Langendijk JA, Hoebens FJP, de Jong MA, Doornaert P, Terhaard CHJ, Steenbakkers R, et al. National Protocol for Model-Based Selection for Proton Therapy in Head and Neck Cancer. *Int J Part Ther* 2021;8:354–65. <https://doi.org/10.14338/IJPT-20-00089.1>.
- [34] Sharabiani M, Clementel E, Andratschke N, Hurkmans C. Generalizability assessment of head and neck cancer NTCP models based on the TRIPOD criteria. *Radiother Oncol* 2020;146:143–50. <https://doi.org/10.1016/j.radonc.2020.02.013>.
- [35] Mandrekar JN. Receiver operating characteristic curve in diagnostic test assessment. *J Thorac Oncol* 2010;5:1315–6. <https://doi.org/10.1097/JTO.0b013e3181ec173d>.
- [36] Verbakel JY, Steyerberg EW, Uno H, De Cock B, Wynants L, Collins GS, et al. ROC curves for clinical prediction models part 1. ROC plots showed no added value above the AUC when evaluating the performance of clinical prediction models. *J Clin Epidemiol* 2020;126:207–16. <https://doi.org/10.1016/j.jclinepi.2020.01.028>.
- [37] Orlandi E, Miceli R, Infante G, Mirabile A, Alterio D, Cossu Rocca M, et al. Predictors of patient-reported dysphagia following IMRT plus chemotherapy in oropharyngeal cancer. *Dysphagia* 2019;34:52–62. <https://doi.org/10.1007/s00455-018-9913-8>.
- [38] Hutcheson KA, Nurgalieva Z, Zhao H, Gunn GB, Giordano SH, Bhayani MK, et al. Two-year prevalence of dysphagia and related outcomes in head and neck cancer survivors: An updated SEER-Medicare analysis. *Head Neck* 2019;41:479–87. <https://doi.org/10.1002/hed.25412>.
- [39] Aylward A, Abdelaziz S, Hunt JP, Buchmann LO, Cannon RB, Lloyd S, et al. Rates of dysphagia-related diagnoses in long-term survivors of head and neck cancers. *Otolaryngol Head Neck Surg* 2019;161:643–51. <https://doi.org/10.1177/0194599819850154>.
- [40] Mortensen HR, Jensen K, Akslaede K, Behrens M, Grau C. Late dysphagia after IMRT for head and neck cancer and correlation with dose-volume parameters. *Radiother Oncol* 2013;107:288–94. <https://doi.org/10.1016/j.radonc.2013.06.001>.
- [41] Nilsen ML, Belsky MA, Scheff N, Johnson JT, Zandberg DP, Skinner H, et al. Late and long-term treatment-related effects and survivorship for head and neck cancer patients. *Curr Treat Options Oncol* 2020;21:92. <https://doi.org/10.1007/s11864-020-00797-x>.
- [42] Wilson JA, Carding PN, Patterson JM. Dysphagia after nonsurgical head and neck cancer treatment: patients' perspectives. *Otolaryngol Head Neck Surg* 2011;145:767–71. <https://doi.org/10.1177/0194599811414506>.
- [43] Atkinson TM, Ryan SJ, Bennett AV, Stover AM, Saracino RM, Rogak LJ, et al. The association between clinician-based common terminology criteria for adverse events (CTCAE) and patient-reported outcomes (PRO): a systematic review. *Support Care Cancer* 2016;24:3669–76. <https://doi.org/10.1007/s00520-016-3297-9>.
- [44] Gluck I, Feng FY, Lyden T, Haxer M, Worden F, Chepeha DB, et al. Evaluating and reporting dysphagia in trials of chemoradiation for head-and-neck cancer. *Int J Radiat Oncol Biol Phys* 2010;77:727–33. <https://doi.org/10.1016/j.ijrobp.2009.05.049>.
- [45] Truong MT, Lee R, Saito N, Qureshi MM, Ozonoff A, Romesser PB, et al. Correlating computed tomography perfusion changes in the pharyngeal constrictor muscles during head-and-neck radiotherapy to dysphagia outcome. *Int J Radiat Oncol Biol Phys* 2012;82:e119–27. <https://doi.org/10.1016/j.ijrobp.2011.04.058>.
- [46] Mazzola R, Ricchetti F, Fiorentino A, Fersino S, Gaj Levra N, Naccarato S, et al. Dose-volume-related dysphagia after constrictor muscles definition in head and neck cancer intensity-modulated radiation treatment. *Br J Radiol* 2014;87:20140543. <https://doi.org/10.1259/bjr.20140543>.
- [47] Soderstrom K, Nilsson P, Laurell G, Zackrisson B, Jaghagen EL. Dysphagia - Results from multivariable predictive modelling on aspiration from a subset of the ARTSCAN trial. *Radiother Oncol* 2017;122:192–9. <https://doi.org/10.1016/j.radonc.2016.09.001>.
- [48] Aylward A, Park J, Abdelaziz S, Hunt JP, Buchmann LO, Cannon RB, et al. Individualized prediction of late-onset dysphagia in head and neck cancer survivors. *Head Neck* 2020;42:708–18. <https://doi.org/10.1002/hed.26039>.
- [49] Ramia P, Bodgi L, Mahmoud D, Mohammad MA, Youssef B, Kopek N, et al. Radiation-Induced Fibrosis in Patients with Head and Neck Cancer: A Review of Pathogenesis and Clinical Outcomes. *Clin Med Insights Oncol*. 2022;16:11795549211036898 DOI: 10.1177/11795549211036898.
- [50] Delanian S, Lefaix JL. Current management for late normal tissue injury: radiation-induced fibrosis and necrosis. *Semin Radiat Oncol* 2007;17:99–107. <https://doi.org/10.1016/j.semradonc.2006.11.006>.
- [51] Hjermstad MJ, Fayers PM, Bjordal K, Kaasa S. Health-related quality of life in the general Norwegian population assessed by the European Organization for Research and Treatment of Cancer Core Quality-of-Life Questionnaire: the QLQ=C30 (+ 3). *J Clin Oncol* 1998;16:1188–96. <https://doi.org/10.1200/JCO.1998.16.3.1188>.
- [52] Petkar I, Bhude S, Newbold K, Harrington K, Nutting C. Dysphagia-optimised intensity-modulated radiotherapy techniques in pharyngeal cancers: Is anyone going to swallow it? *Clin Oncol (R Coll Radiol)* 2017;29:e110–8. <https://doi.org/10.1016/j.clon.2017.02.002>.
- [53] Vanier A, Oort FJ, McClimans L, Ow N, Gulek BG, Bohnke JR, et al. Response shift in patient-reported outcomes: definition, theory, and a revised model. *Qual Life Res* 2021;30:3309–22. <https://doi.org/10.1007/s11136-021-02846-w>.
- [54] Kwon JY, Russell L, Coles T, Klaassen RJ, Schick-Makaroff K, Sibley KM, et al. Patient-reported outcomes measurement in radiation oncology: interpretation of individual scores and change over time in clinical practice. *Curr Oncol* 2022;29:3093–103. <https://doi.org/10.3390/curroncol29050251>.
- [55] Van Calster B, McLernon DJ, van Smeden M, Wynants L, Steyerberg EW, Topic Group 'Evaluating diagnostic t, et al. Calibration: the Achilles heel of predictive analytics. *BMC Med*. 2019;17:230 DOI: 10.1186/s12916-019-1466-7.
- [56] Ursino S, Giuliano A, Martino FD, Cocuzza P, Molinari A, Stefanelli A, et al. Incorporating dose-volume histogram parameters of swallowing organs at risk in a videofluoroscopy-based predictive model of radiation-induced dysphagia after head and neck cancer intensity-modulated radiation therapy. *Strahlenther Onkol* 2021;197:209–18. <https://doi.org/10.1007/s00066-020-01697-7>.
- [57] Chopra RR, Bogart JA. Radiation therapy-related toxicity (including pneumonitis and fibrosis). *Emerg Med Clin North Am* 2009;27:293–310. <https://doi.org/10.1016/j.emc.2009.01.010>.
- [58] Hansen CR, Friborg J, Jensen K, Samsoe E, Johnsen L, Zukauskaitė R, et al. NTCP model validation method for DAHANCA patient selection of protons versus photons in head and neck cancer radiotherapy. *Acta Oncol* 2019;58:1410–5. <https://doi.org/10.1080/0284186X.2019.1654129>.
- [59] Ursino S, Calistri E, De Felice F, Bonomo P, Desideri I, Franco P, et al. Patient-Reported Outcomes After Swallowing (SWOARs)-Sparing IMRT in Head and Neck Cancers: Primary Results from a Prospective Study Endorsed by the Head and Neck Study Group (HNSG) of the Italian Association of Radiotherapy and Clinical Oncology (AIRO). *Dysphagia* 2023;38:159–70. <https://doi.org/10.1007/s00455-022-10434-4>.
- [60] Nutting C, Finneran L, Roe J, Sydenham MA, Beasley M, Bhide S, et al. Dysphagia-optimised intensity-modulated radiotherapy versus standard intensity-modulated radiotherapy in patients with head and neck cancer (DARS): a phase 3, multicentre, randomised, controlled trial. *Lancet Oncol* 2023;24:868–80. [https://doi.org/10.1016/S1470-2045\(23\)00265-6](https://doi.org/10.1016/S1470-2045(23)00265-6).